

# UNIVERSITY OF CONNECTICUT CLUB SPORTS

## EMERGENCY RESPONSE PLAN

### Depot Campus Field

#### Emergency Personnel:

In event of an emergency, EMS should be contacted immediately. Club Sports Athletic Trainer and Club Sports Site Managers will be on site for select practices and competition events or in direct communication with coaching staff.

#### Emergency Communication:

Cellular phone with Club Sports AT, Club Sports Site Manager or coach during practices/competitions when covered

Two-way Radio between Club Sport AT and Club Sport Site Manager

#### Emergency Equipment:

Athletic Training Kit

Team first aid kit

AED located in the storage shed on the wall

AED will be on site for contact events covered by AT

#### Emergency Procedures:

1. Perform Emergency CPR and First Aid
2. Instruct student athletic trainer, coach, or bystander to call 911 or 860-486-4925
  - a. Provide the following information
    - i. Who you are
    - ii. General information about the injury or situation (Provide: name, address, telephone #, number of individuals injured)
    - iii. Where you are with specific directions\*

**45 Weaver Road, Storrs Mansfield, CT 06269**



**\*Head West on North Eagleville Rd, Right onto Hunting lodge Rd, Left onto Birch Rd and bear Left onto Weaver Rd. Enter parking lot on Right.**
    - iv. Any additional information
    - v. **\*BE THE LAST TO HANG UP\***
3. Contact the Specialist in Athletic Training
4. Meet ambulance and direct to appropriate site
  - a. Open Appropriate Gates/Doors
  - b. Designate an individual to "flag down" and direct to scene
5. Control injury site, limit care providers etc.
6. Assist ATC and/or EMS with care as directed
7. Retrieve Necessary Supplies/Equipment

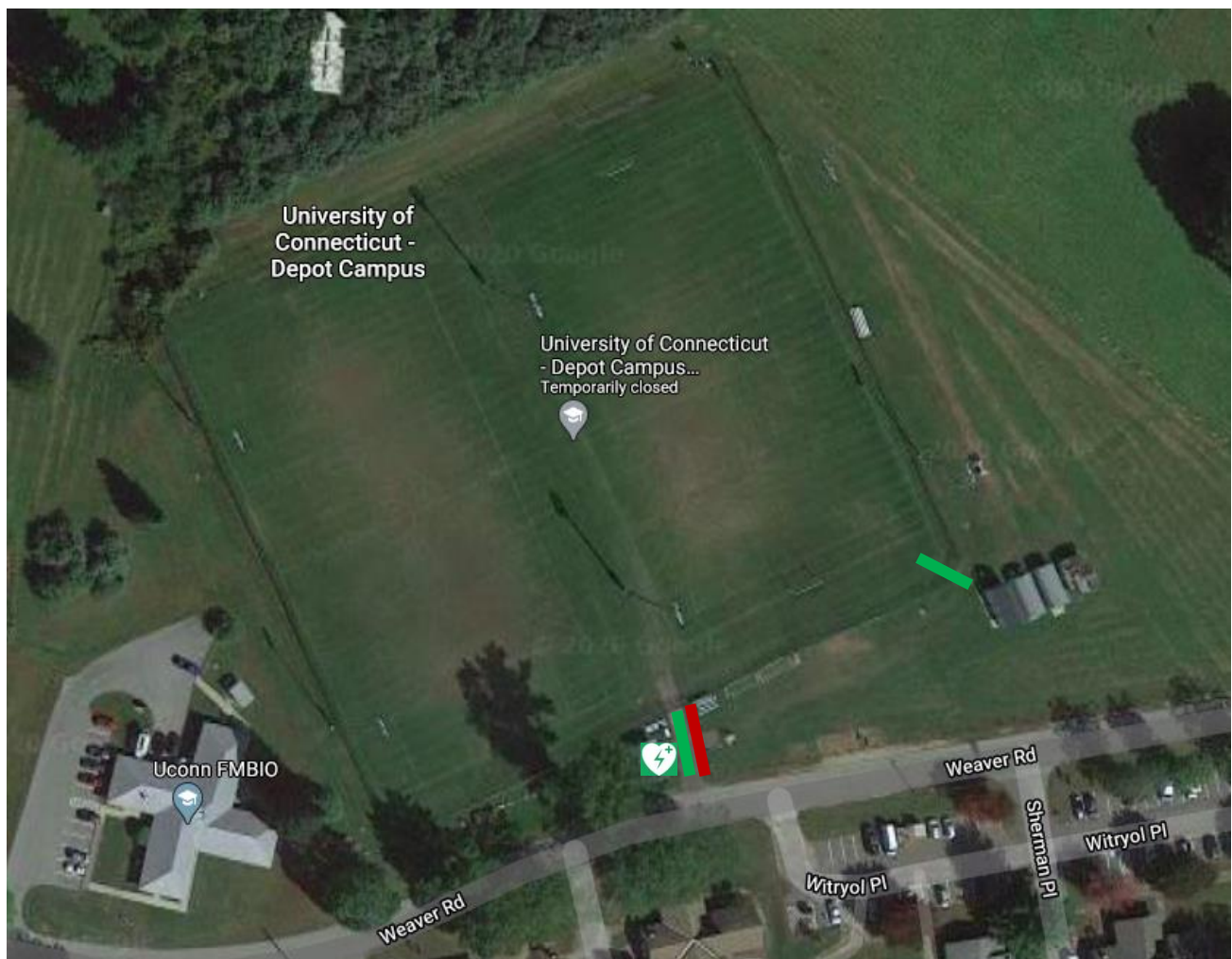
### Evacuation Route:

In the event of an emergency needing evacuation from the field, individuals can evacuate to their cars and use Weaver Road for evacuation of the area

### Shelter in Place:

In the event of an emergency needing shelter in place, individuals can shelter in their cars and/or the medical storage building

-  - Emergency Entrance for EMS
-  - Participant Exit



Indicates AED location

1. Main storage building
  - a. On the wall to the right of the main entrance door